



JEFFERSON TOWNSHIP - NORTH POCONO SCHOOLS



OUTLOOK
CONSTRUCTION
Your Builder

www.outlookconstruction.com

ABOUT STONEFIELD ESTATES



Nestled in the mountains of Jefferson Township (often known as Mount Cobb) Pennsylvania, StoneField Estates is a tranquil new home community offering the best in luxury rural living. Conveniently located less than 3 miles from Interstate 84 and 20 minutes from Scranton you can be close to everything and live in the country!

StoneField Estates boasts over one hundred and twenty 1/4 of an acre to 1.5 acre building lots, underground utilities, township roads, public sewage, landscaped entrances, and much more. Cottage home and lot packages start from mid \$200's! Manor home and lot packages start from mid \$300's!

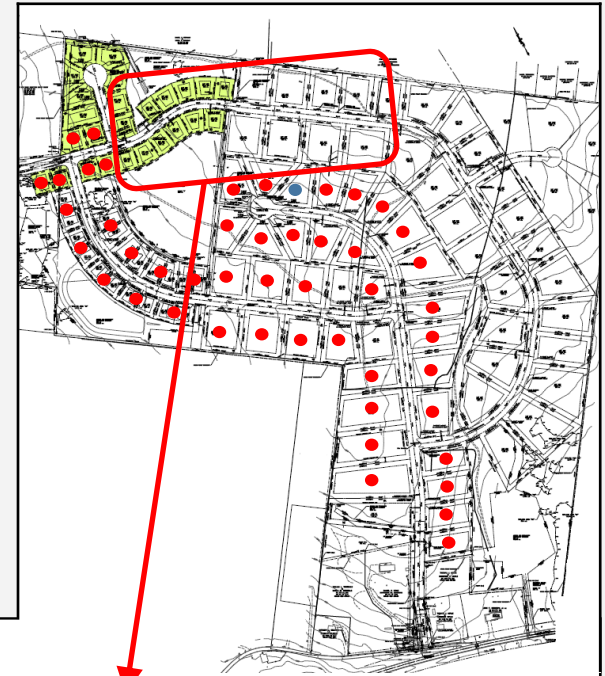
NEIGHBORHOOD HIGHLIGHTS

- North Pocono School District
- Jefferson Township
- Variety of lot sizes (1/3 acre to 1.5+ acres)
- Township roads
- Protective covenants
- No Homeowner's Association Fees
- Quiet low traffic neighborhood - but close to everything
- Underground Utilities (electric, cable, internet, phone)
- On lot well water
- Public sewage system (JTSA)
- Complete home and lot packages
- Our home plans or yours

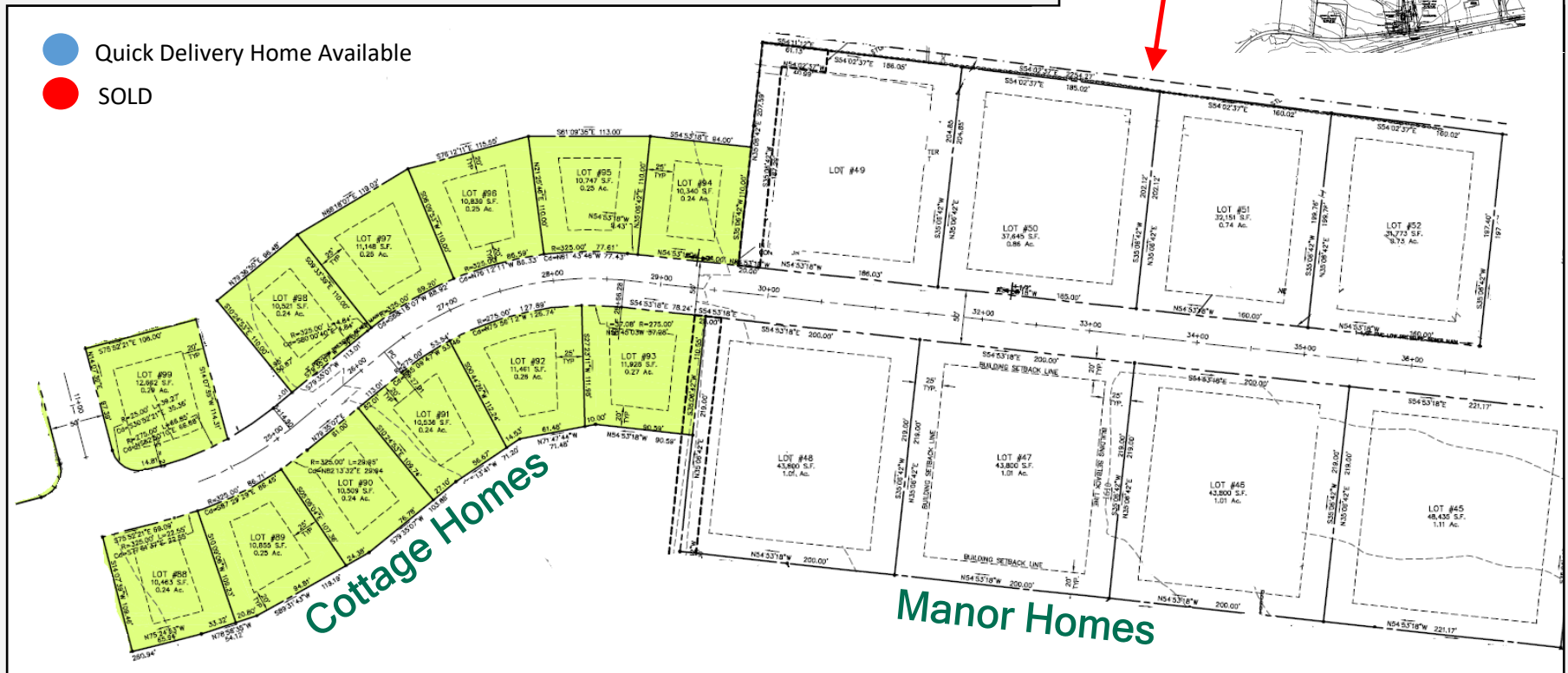
Quiet rural lots.

NEIGHBORHOOD MAP

StoneField Estates offers varying lot types and sizes including wooded and cleared lots as well as flat and sloped lots. Phase 1 & 2 are nearly 100% sold. Phase 3 home and lot packages will be available in summer 2020. Phase 3 offers both 3/4+ acre Manor home (2,000 sq. ft.+ homes) lots and 1/4 to 1/3 acre Cottage home lots (1,000 to 2,200 sq. ft. homes).



Phase 3 Section



Layout, lot configuration, number of lots, etc. subject to change without notice.

COTTAGE HOMES

StoneField Estates Cottage Homes are situated on lots 1/4 to 1/3 acre in size and the homes are typically 1,200 to 2,200 square feet. Complete home and lot packages are available starting from the mid \$200s.

COTTAGE HOME HIGHLIGHTS

- 1/4 to 1/3 acre or larger lots
- Typically 1,200 to 2,200 square feet
- Many floor plans to choose from (can customize plans)
- Complete home & lot packages

HOME PLANS

Choose from one of our many home plans! To explore our home plans visit us online at:

www.outlookconstruction.com/home-plans.html
(Search for plans 1,000 to 2,200 sq. ft. - some lots have home width restrictions)

Cottage Home & Lot Packages
From Mid \$200s



Affordable luxury homes!



MANOR HOMES

StoneField Estates Manor Homes are situated on lots 3/4 acre in size or larger and the homes are typically 2,000 square feet or larger. Complete home and lot packages are available starting from the mid \$300s.

MANOR HOME HIGHLIGHTS

- 3/4 acre or larger lots
- Typically 2,000 to 5,000 square feet
- Our floor plan or yours
- Complete home & lot package

HOME PLANS

We will build our home plan or yours! To explore our home plans visit us online at:

www.outlookconstruction.com/home-plans.html
(Search for plans 2,000 sq. ft. or larger)

Manor Home & Lot Packages
From Mid \$300s

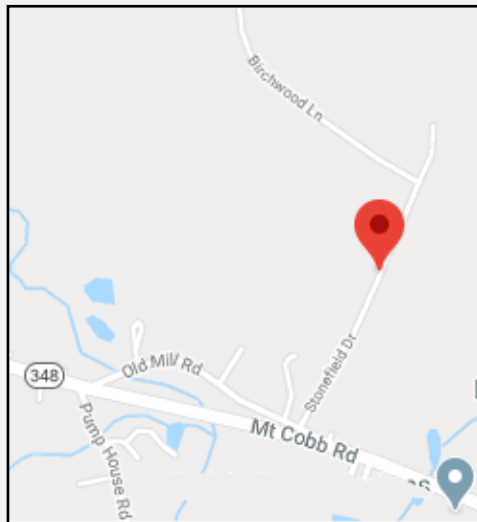




LOCATION / DIRECTIONS

Take I-84 to exit 8 (Mount Cobb / Hamlin). Turn onto 247 toward the Burger King. Turn right on Route 348 (toward Hamlin). After approx. 2 miles turn left onto Old Mill Road (at the StoneField Estates sign). Turn left onto StoneField Drive.

Google Maps / GPS Address: Stonefield Dr, Jefferson Township, PA 18436



PO Box 400
Hamlin, PA 18427

Office / Design Center:
1220 Mount Cobb Rd
Jefferson Township, PA 18436

Phone: 570-689-7001
Fax: 570-689-4895

Email: info@outlookconstruction.com
www.outlookconstruction.com

Outlook Construction is an Equal Opportunity builder. This brochure is for informational marketing purposes only and is subject to change at any time without notice. Nothing in this brochure should be considered contractual or binding.

© Copyright 2020